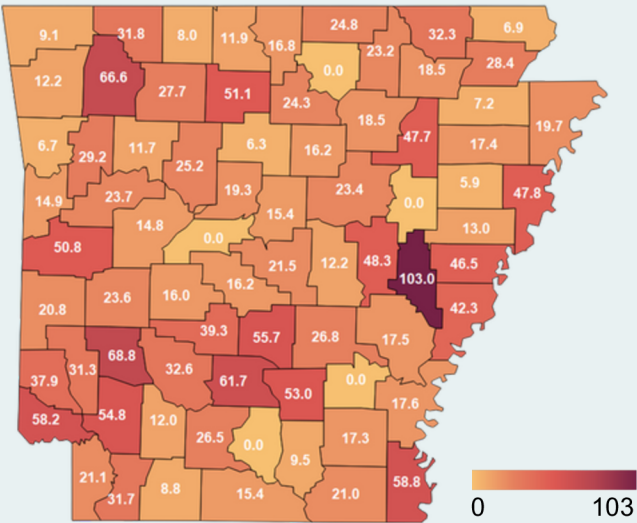


Key Findings

- In 2023, there were 590 roadway fatalities in Arkansas, including motorists, motorcyclists, bicyclists, and pedestrians. This marks a 7% decline from 2022 and a 15% decline from a recent peak of 692 fatalities in 2021.
- Rural counties in Arkansas had higher rates of roadway fatalities compared to more urban counties. In 2023, Monroe County had the highest fatality rate in the state with 103 fatalities per 100,000 residents.
- Risky behaviors contributed to roadway fatalities in 2023: In 46% of motorist fatalities, no restraint was used by vehicle occupants, and 62% of motorcycle occupants who died were not wearing a helmet.

Rate of Roadway Fatalities per 100,000 Residents by County, 2023



Counties With Highest Roadway Fatality Rates per 100,000 Residents, 2023

1. Monroe: 103.0
2. Pike: 68.8
3. Madison: 66.6
4. Dallas: 61.7
5. Chicot: 58.8
6. Little River: 58.2
7. Grant: 55.7
8. Hempstead: 54.8
9. Cleveland: 53.0
10. Searcy: 51.1

Roadway Fatalities by Occupant Protection, 2023



Restraint Use

46% NO RESTRAINT USED
43% RESTRAINT USED
11% UNKNOWN



Helmet Use
(Motorcycle Occupants)

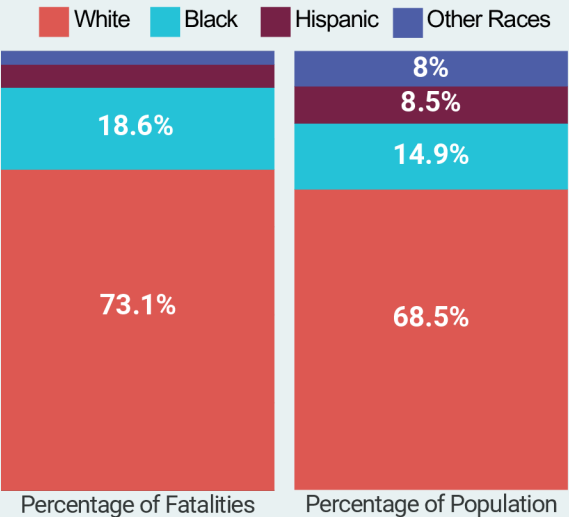
62% NO HELMET USED
34% HELMET USED
4% UNKNOWN

Roadway Fatalities by Sex, 2023

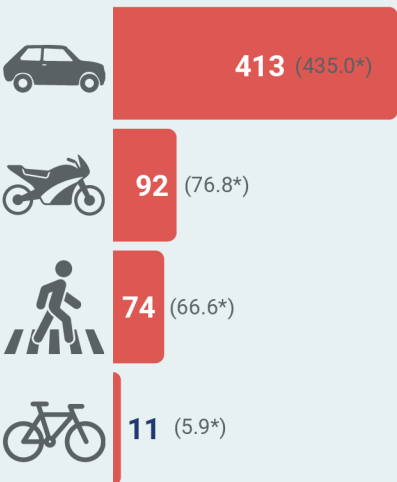
73% Male (432)

27% Female (157)

Roadway Fatalities by Race/Ethnicity Compared to Population, 2023

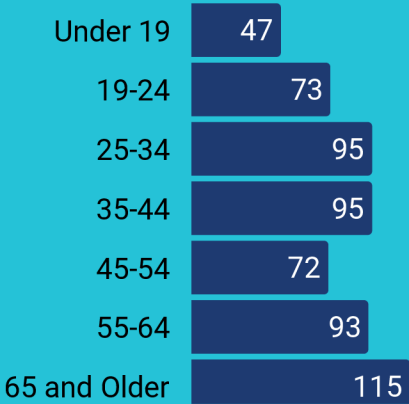


Roadway Fatalities by Type of Road User, 2023



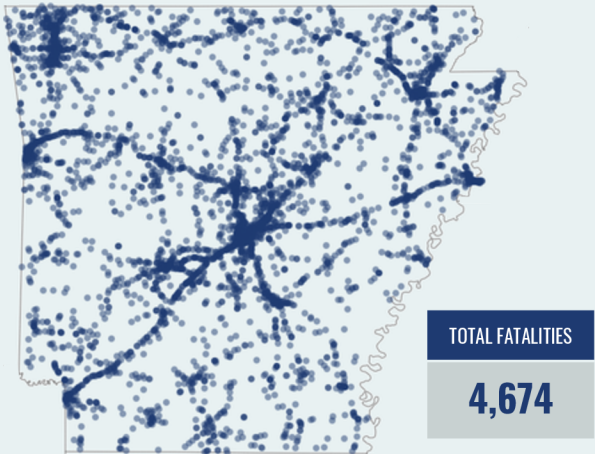
*2016-2023 Annual Average

Roadway Fatalities by Age, 2023



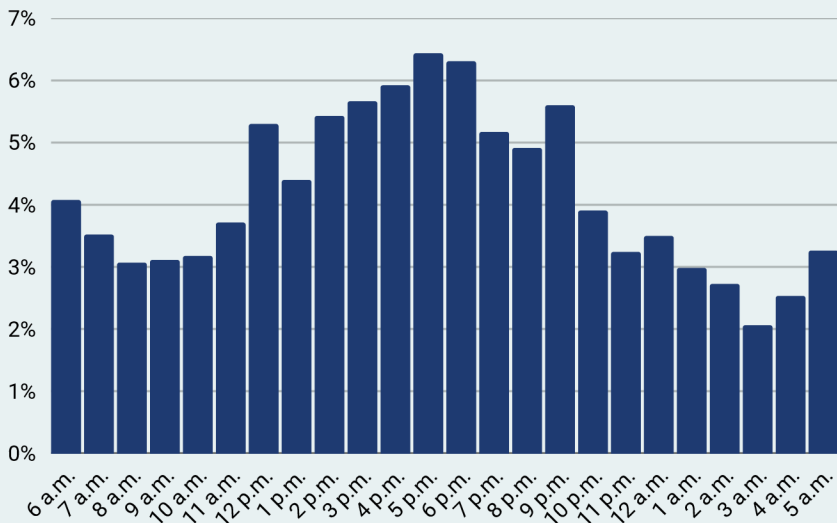
2016-2023 Data Trends

Arkansas Roadway Fatalities, 2016-2023

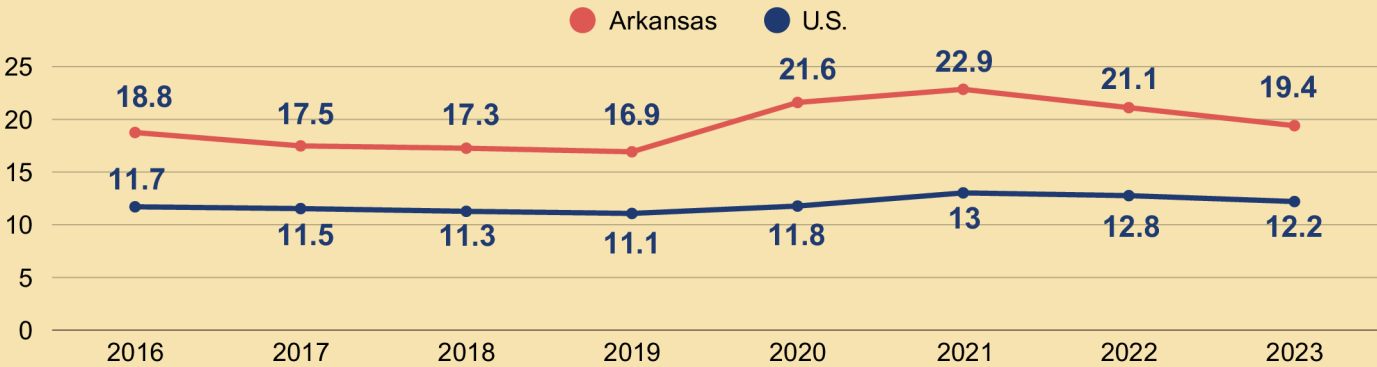


Dots indicate locations of roadway fatalities. Darker areas indicate multiple fatalities during the study period.

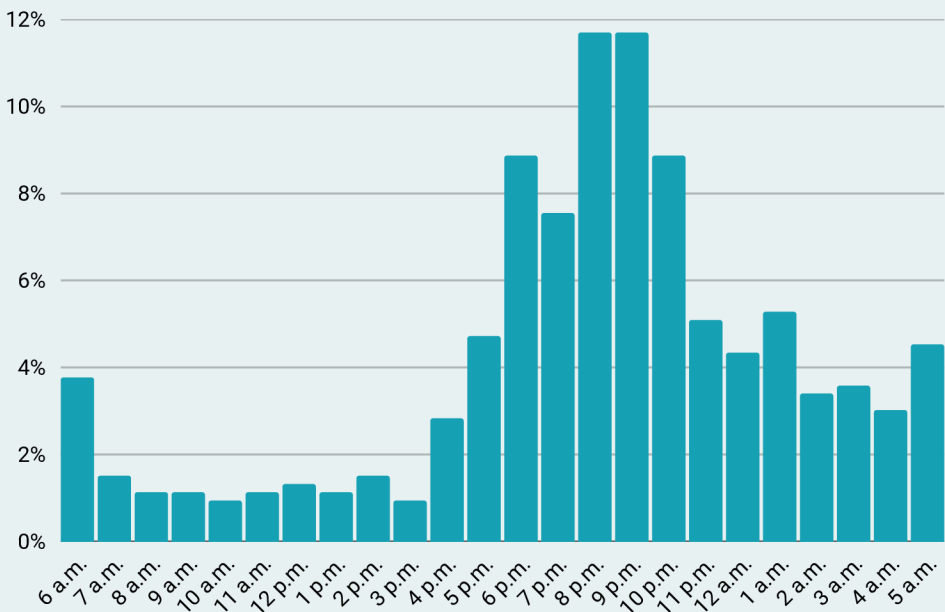
Arkansas Roadway Fatalities by Hour, 2016-2023



Annual Trends in Roadway Fatalities per 100,000 People, Arkansas and US



Arkansas Pedestrian Fatalities by Hour, 2016-2023



Pedestrian Fatalities by Race & Ethnicity, 2016-2023

