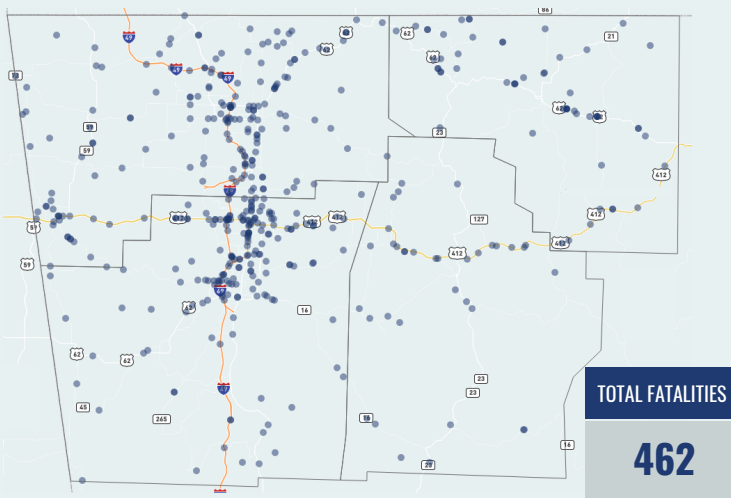


KEY FINDINGS

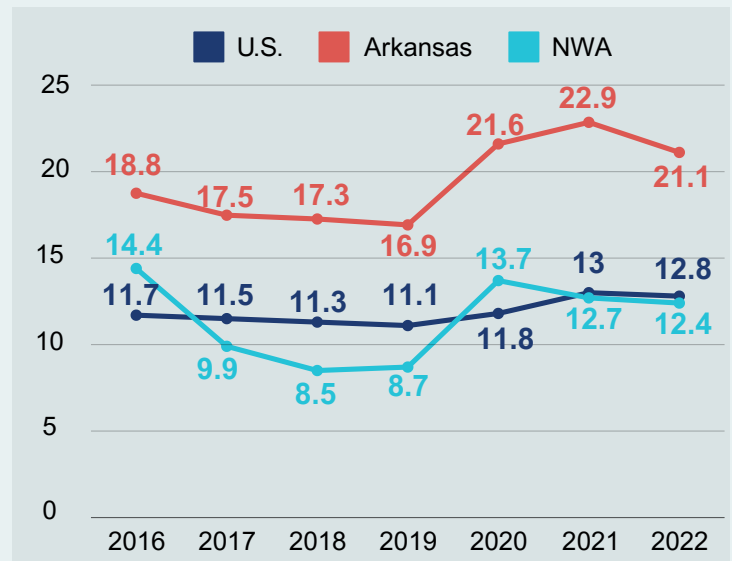
- Between 2016 and 2022, there were 462 roadway fatalities in Northwest Arkansas.^a
- Roadway fatality rates peaked in 2016 (14.4 deaths 100,000 people) and decreased through 2018 prior to increasing again during the COVID-19 pandemic.
- Roadway fatality rates were three times higher in Carroll and Madison counties than in Benton and Washington counties.
- Motorists accounted for 65% of roadway fatalities, followed by motorcyclists (20%), pedestrians (14%), and bicyclists (1%).
- Risky behaviors contributed to roadway fatalities: In 43% of motorist fatalities, no restraint was used by vehicle occupants; 23% of roadway fatalities involved speeding; and more than half (54%) of motorcycle occupants who died were not wearing a helmet.

NORTHWEST ARKANSAS ROADWAY FATALITIES, 2016-2022



Dots indicate locations of roadway fatalities. Darker areas indicate multiple fatalities during the study period.

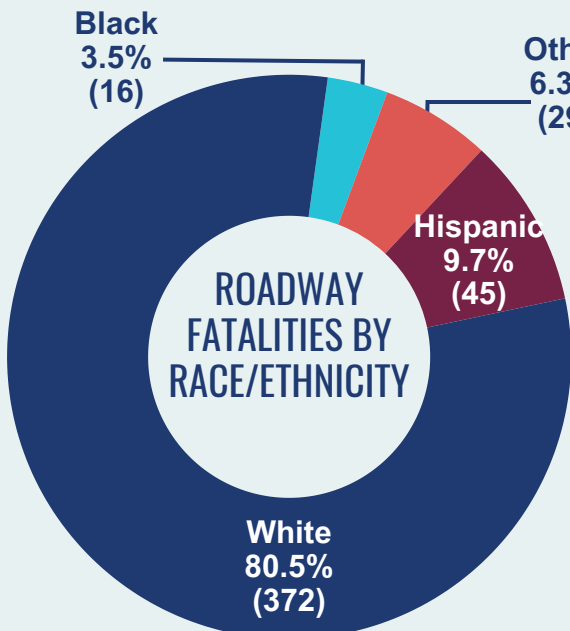
ANNUAL TRENDS IN ROADWAY FATALITIES PER 100,000 PEOPLE



ROADWAY FATALITIES BY GENDER

69% Male (317)

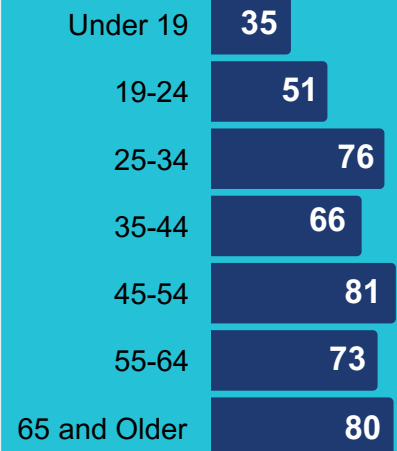
31% Female (144)



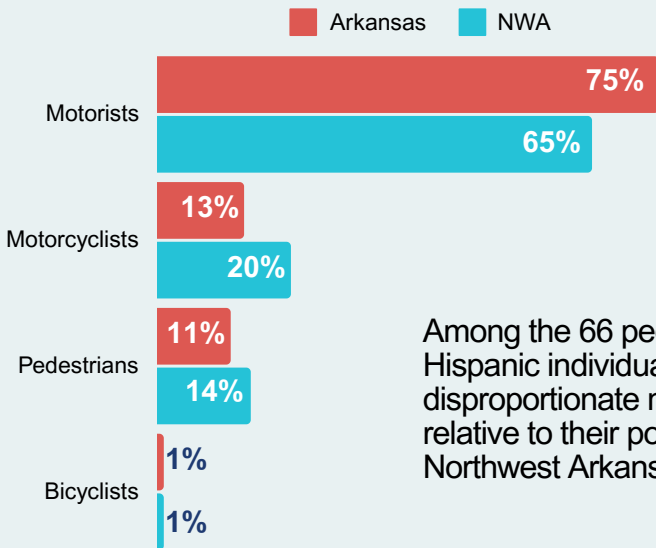
ROADWAY FATALITIES BY RACE/ETHNICITY

- Males accounted for more than two-thirds of all roadway fatalities.
- White individuals represented the majority of all roadway fatalities.
- Adults ages 45-54 experienced the highest number of roadway fatalities, followed by adults ages 65 and older.

ROADWAY FATALITIES BY AGE

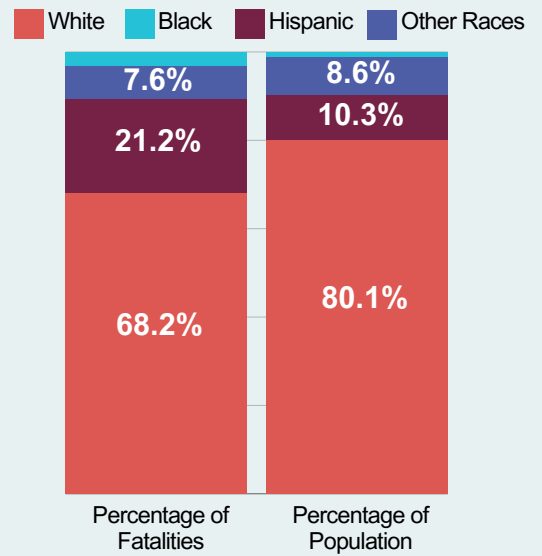


ROADWAY FATALITIES BY TYPE OF ROAD USER



Among the 66 pedestrian deaths, Hispanic individuals represented a disproportionate number of fatalities relative to their population size in Northwest Arkansas.

PEDESTRIAN FATALITIES BY RACE & ETHNICITY



ROADWAY FATALITIES BY RISKY BEHAVIORS & OCCUPANT PROTECTION



Restraint Use

43% NO RESTRAINT USED
47% RESTRAINT USED
10% UNKNOWN



Helmet Use (Motorcycle Occupants)

54% NO HELMET USED
44% HELMET USED
2% UNKNOWN



Speeding

23% SPEEDING
32% NOT SPEEDING
46% UNKNOWN

AVERAGE ANNUAL ROADWAY FATALITIES PER 100,000 RESIDENTS, BY NORTHWEST ARKANSAS COUNTY

