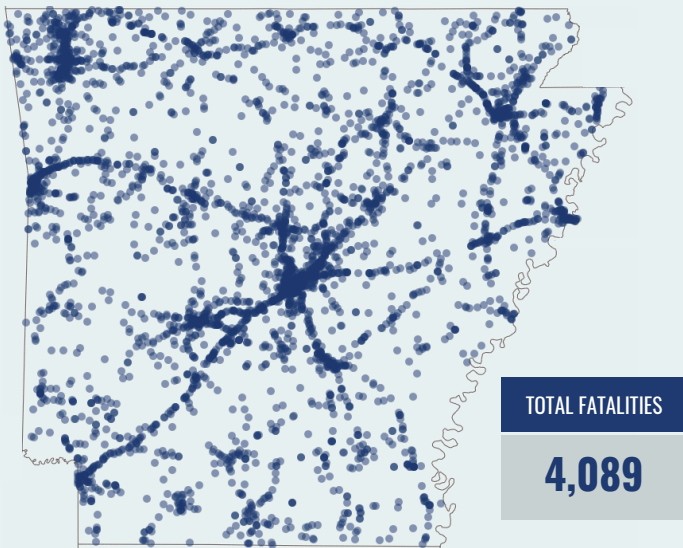


KEY FINDINGS

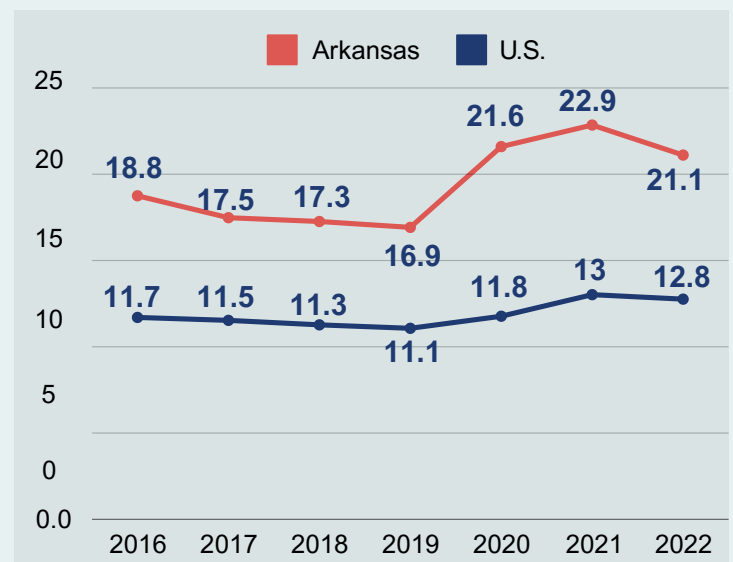
- Between 2016 and 2022, there were 4,089 roadway fatalities in Arkansas.
- In 2022, Arkansas had the fourth-highest roadway fatality rate of all the states and the District of Columbia (21.1 deaths per 100,000 people).
- Roadway fatalities increased during the COVID-19 pandemic, peaking in 2021 with 691 fatalities that year.
- Motorists accounted for 75% of roadway fatalities, followed by motorcyclists (13%), pedestrians (11%), and bicyclists (1%).
- Risky behaviors contributed to roadway fatalities: In 50% of motorist fatalities, no restraint was used by vehicle occupants; 20% of roadway fatalities involved speeding; and more than half (57%) of motorcycle occupants who died were not wearing a helmet.

ARKANSAS ROADWAY FATALITIES, 2016-2022



Dots indicate locations of roadway fatalities. Darker areas indicate multiple fatalities during the study period.

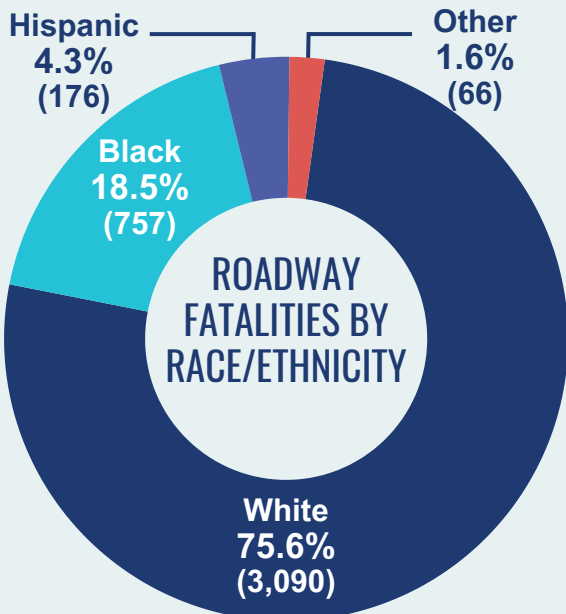
ANNUAL TRENDS IN ROADWAY FATALITIES PER 100,000 PEOPLE, ARKANSAS AND US



ROADWAY FATALITIES BY GENDER

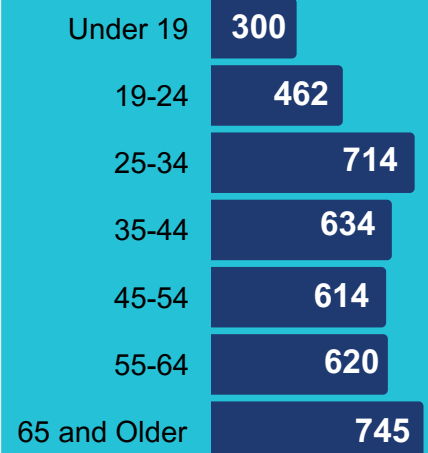
70% Male
(2,865)

30% Female
(1,222)

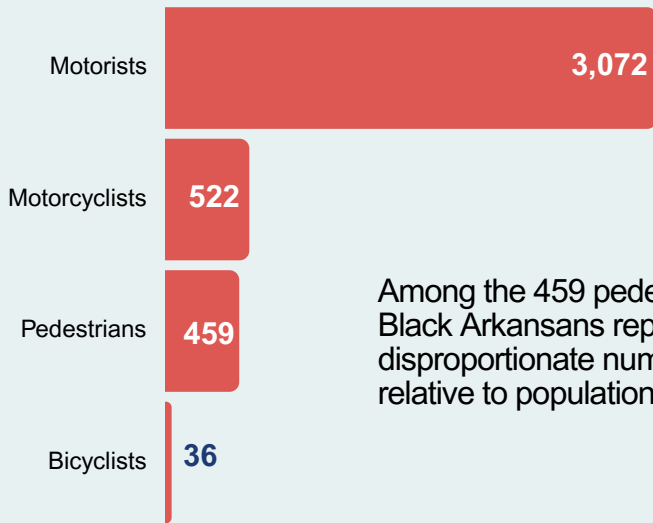


- Male Arkansans accounted for more than two-thirds of all roadway fatalities.
- White Arkansans represented three-quarters of all roadway fatalities.
- Both White and Black Arkansans experienced a disproportionate number of fatalities relative to their population size.
- Adults 65 and older experienced the highest number of roadway fatalities, followed by adults ages 25-34.

ROADWAY FATALITIES BY AGE

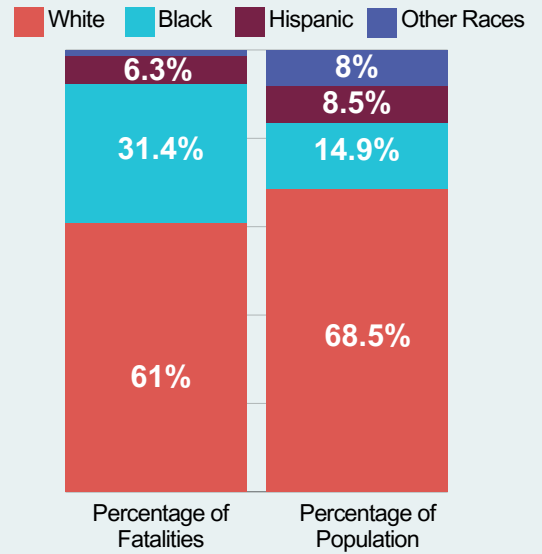


ROADWAY FATALITIES BY TYPE OF ROAD USER

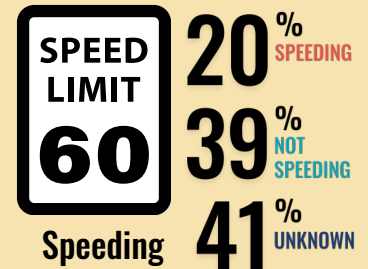
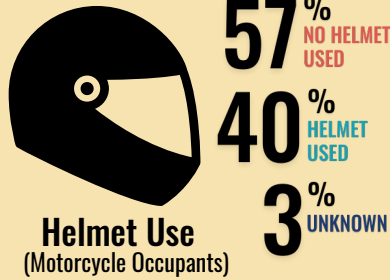
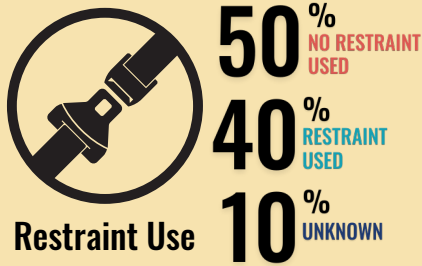


Among the 459 pedestrian deaths, Black Arkansans represented a disproportionate number of fatalities relative to population size.

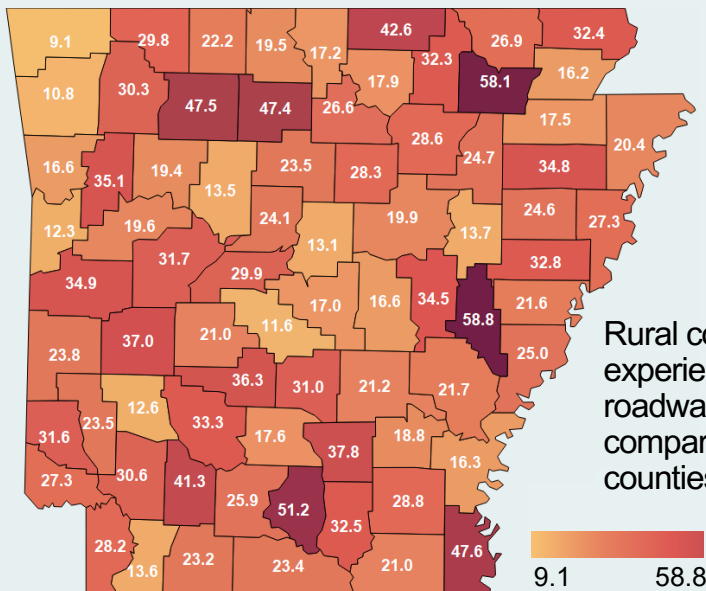
PEDESTRIAN FATALITIES BY RACE & ETHNICITY



ROADWAY FATALITIES BY RISKY BEHAVIORS & OCCUPANT PROTECTION



AVERAGE ANNUAL ROADWAY FATALITIES PER 100,000 RESIDENTS, BY COUNTY



COUNTIES WITH THE HIGHEST ROADWAY FATALITY RATES PER 100,000 RESIDENTS

1. Monroe: 58.8
2. Lawrence: 58.1
3. Calhoun: 51.2
4. Chicot: 47.6
5. Newton: 47.5
6. Searcy: 47.4
7. Fulton: 42.6
8. Nevada: 41.3
9. Cleveland: 37.8
10. Montgomery: 37