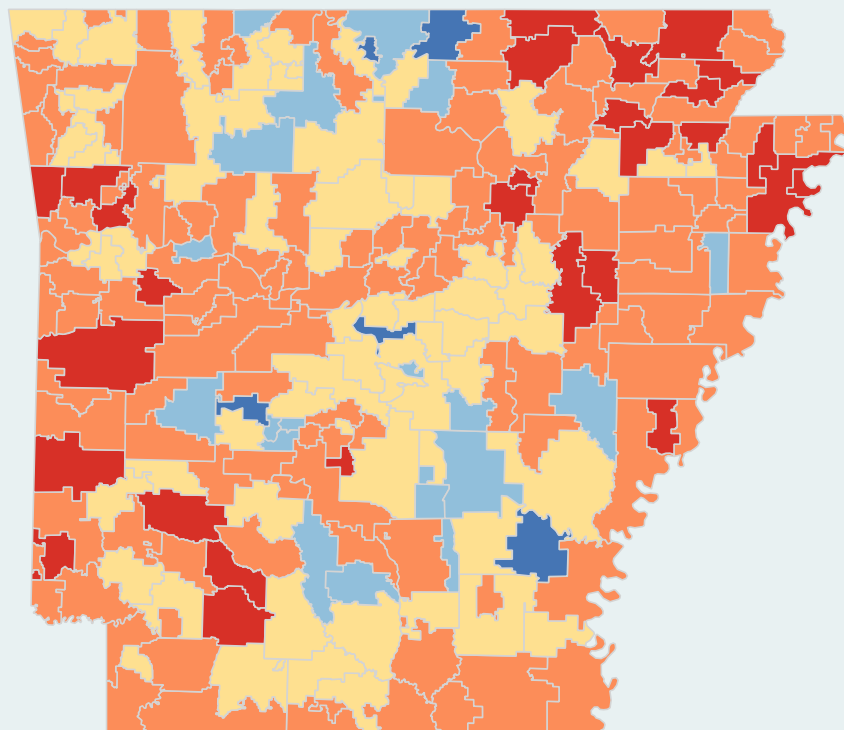


# COVID-19: LOCAL DATA

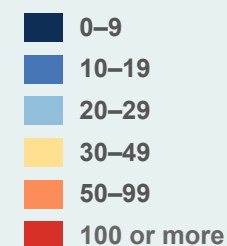


## Rates of Known COVID-19 Infections Among Residents by School District



The map and tables show the counts, rates, and trends for known COVID-19 infections for school districts as of September 20, 2021. School district data include all residents in each school district. Some districts may have missing rates because rates based on infection counts of fewer than 5 are not displayed.

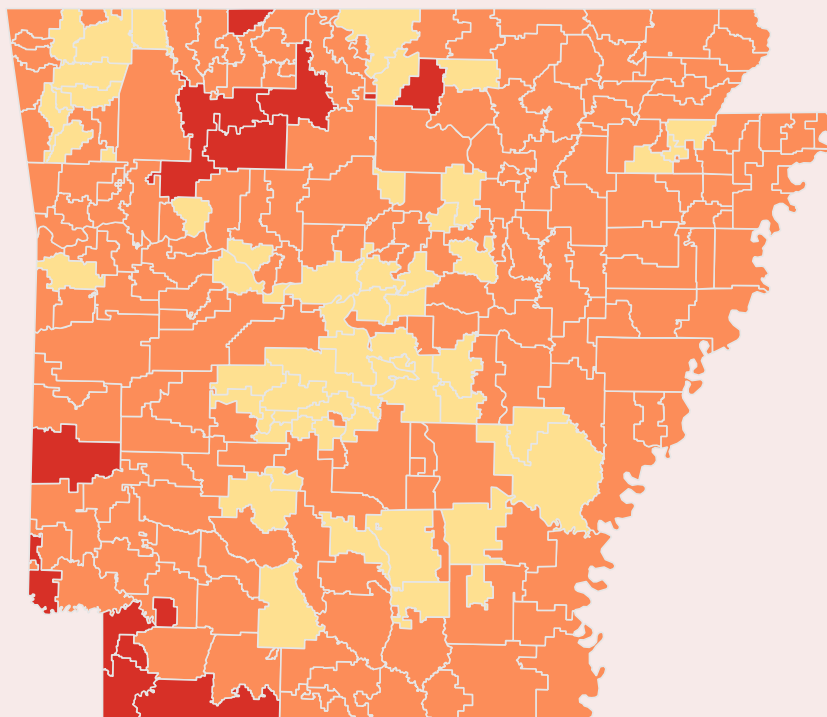
The color scale on the map and trend table references the rates of new known infections for a 14-day period per 10K residents.



# COVID-19: LOCAL DATA

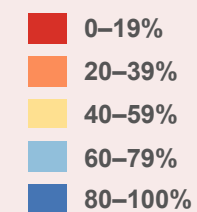


## Fully Vaccinated Residents by School District



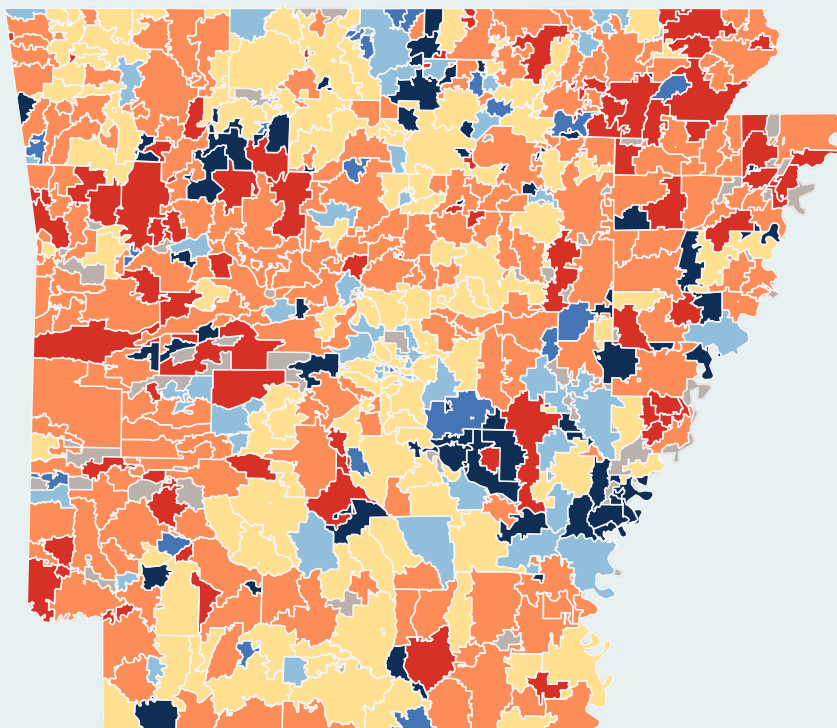
The map and table show the percentage of fully vaccinated individuals among the total population of each Arkansas school district as of September 20, 2021. Data for Arkansas residents who received vaccinations in neighboring states are not currently available, which may result in some rates being underreported.

### Percentage of Residents Fully Vaccinated in Each School District



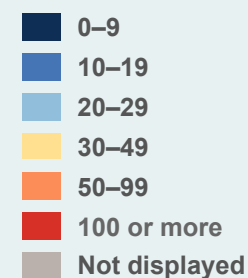
# COVID-19: LOCAL DATA

## Rates of New Known Infections by ZIP Code



The map and table show the counts and rates of known infections in Arkansas ZIP codes as of September 20, 2021. Some ZIP codes may have missing rates because rates based on infection counts of fewer than 10 are not displayed.

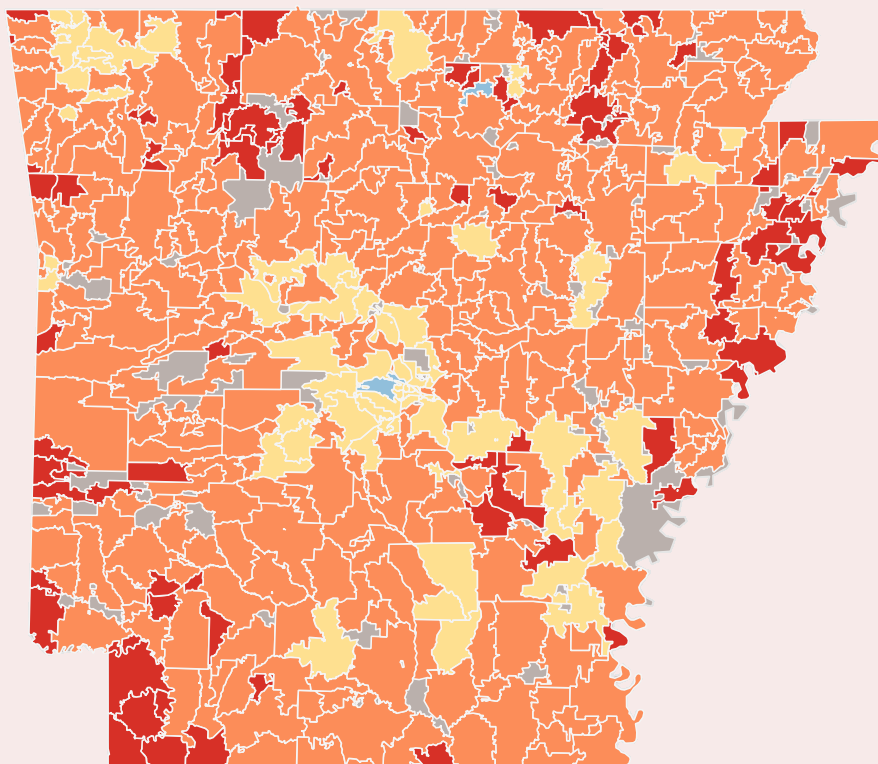
The color scale on the map references the rates of new known infections for a 14-day period per 10K residents.



# COVID-19: LOCAL DATA



## Fully Vaccinated Residents by ZIP Code



The map and table show the percentage of fully vaccinated individuals among the total population of Arkansas ZIP codes as of September 20, 2021. Data for Arkansas residents who received vaccinations in neighboring states are not currently available, which may result in some rates being underreported. See the About the Data section for more information.

### Percentage of Residents Fully Vaccinated in Each ZIP Code.

